

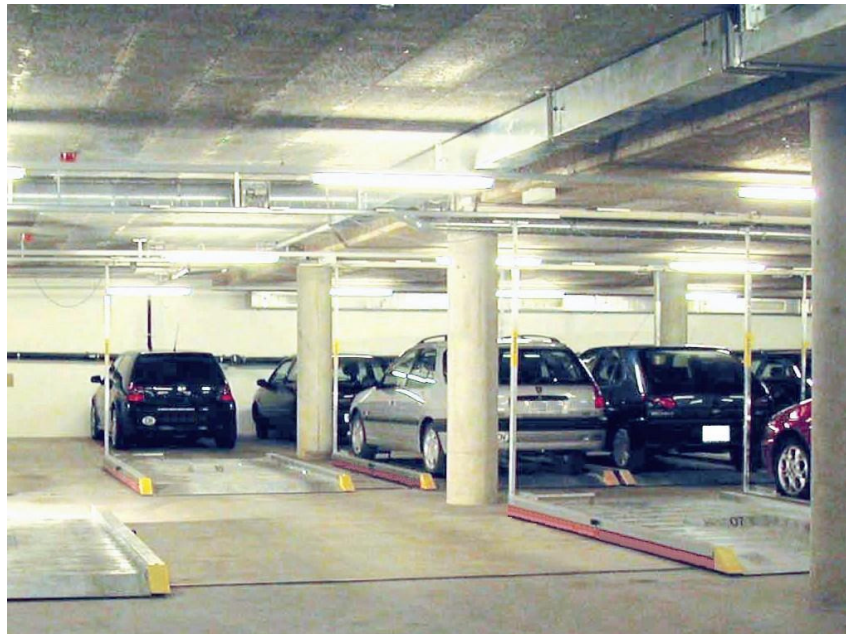
MOVING PLATFORM Q3 crosswise

www.lima-systems.ch

Fully manufactured in Switzerland
In cooperation with BAUMANN Elektrotechnik AG

Electro- driven carpark platform, for comfortable and independant parking in two or more parking lines. Easy parking; driver side is always free- the pallet prepares sideways (see also planning sketch). Useful in many layouts, space optimising even in stepped areas, sametime reducing costs per storage bay. Flexible dimensions- usable also for retrofit.

Comfortable parking even in crowded area: Very comfortable parking- free space for opening the door always guaranteed, the pallet prepares sideways, (see planning sketch).



System description

Well sized sheet metal construction. Platform fully plane and dewatered, equipped with 2 guiding rollers (front side) and 3 heavy duty plastic rollers (rearside), securing silent moving. Coloured end caps and a flexible ramp secure easy and comfortable parking. Adjustable wheel stopper for easy car positioning. Power supply with travelling cable from ceiling.



Platform with end cap, ramp, guide rail, safety bar

Specification

Drive:	Strong, moved drive 0.18 kW 2 drive rollers in the centre of each pallet Friction drive with soft start
Speed:	Approx 11 m/min
Sequence:	Plattform prepared in max. 30 seconds
Platform length:	366 cm incl. ramp (others on request)
Platform width over buffer	211/221/231 cm (others on request)
Inner platform width:	185/195/205 cm (others on request)
Height of platform area:	80 mm above finished floor
Height of side beams:	157 mm above finished floor
Load:	2'000 kg (2'300/2'500 kg), others on request
In case of power failure:	Drives can be released by simply using a hand lever, the pallets are then easy movable, even with parked cars and even in groups.

Control

Control panel RAL 7032 / IP55 with integrated, lockable main switch
Power supply 3 x 400 V / 50 or 60 Hz
Control tension of safety circle 230 VAC
Control tension of platform control 24 VDC
Platform control with LED above each pallet
Drives with **soft start control**

Operating

Selection of parking lot by using keypad (number) and LED Display. Pushing „Start“ on the operation panel starts the moving of the platforms. Each pallet actuats independant, for individually positionning. The selected pallet releases a free space from f.e. 50-100cm (driver side) to secure comfortable door opening.

No reset position; after pushing start, the plant is locked against third persons (time period). This guarantees safe and secure parking.

Option: Ligth barrier, for safety reason (in case of reduced column distances)

Safety

Safety stop with LED indication (relasing by turn)

For safety reason: Both side of platforms: safety bars: In case of touch, the pallets stop moving (preventing squeezing according SN EN14010)

System in accordance with machine directive and corresponding safety requirements. A letter of conformity is handed over.

In case of touched safety bar

A LED on the operation panel indicates failure „safety bar activated“.

For simple diagnosis: A LED above the corresponding pallet informs. System is only ready, when fault found resp. confirmed (reset button).

Availability in case of power failure

Park lot available also in case of power failure: Relasing the drives (by simply using a hand lever): The pallets are now easy movable, even loaded and even in groups.

Scope of supply

Units complet, consisting mainly of

- Sidebeam, crossbeams, platform sheets
- Drive, control, operating panel(s)
- Guide rail
- Traveling cables in ceiling area

Coating- LIMA standard

Wetted parts hot-zinc dipped, with very high coating, at least 80um.

Advantages

- Simple and strong, designed for long life: platform in 3.0mm metal sheet
- Frame and platform hot-zinc dipped, coating about 80um
- Low height, smooth ramp- for higher comfort
- Silent moving- using heavy duty plastic rollers
- Flexible dimensions, f.e. in case of retrofit
- Maintenance friendly: Easy access to components and drives. Drives brushless
- Simple: No PLC, no manufacturer specific control parts, no prints: Simple repairs, and parts available even in many years
- Available in case of power failure: Releasing the drives by using a hand lever makes the pallets easy movable, even loaded and even in groups
- Parking Comfort: Coloured side caps for easy parking
- Parking Comfort: Driver side free, pallet moves sideways to release space